

BRASS!

(Easy) for Piano

BBE / BrassFoundations

♩=132 With a medium swing

Musical score for the first system, measures 1-4. The score is in 4/4 time with a key signature of three flats (B-flat major/C minor). The tempo is marked as ♩=132 with a medium swing. The music is for piano. The first staff is a treble clef with a whole rest. The second staff is a grand staff with a treble clef. The first measure has a piano (*f*) dynamic. Chords are indicated above the staff: Db, Gb6, Db, and Ebm/Gb.

5

Musical score for the second system, measures 5-8. The score is in 4/4 time with a key signature of three flats. The music is for piano. The first staff is a treble clef with a whole rest. The second staff is a grand staff with a treble clef. The first measure has a piano (*f*) dynamic. Chords are indicated above the staff: Db, Gb6, G°7, and Db/Ab. The dynamic *sfz* is marked in the second measure.

A

9

Musical score for the third system, measures 9-12. The score is in 4/4 time with a key signature of three flats. The music is for piano. The first staff is a treble clef with a whole rest. The second staff is a grand staff with a treble clef. The first measure has a mezzo-forte (*mf*) dynamic. The lyrics are: "You can learn to do some - thing that's cool and sounds quite cl-ever, ma-king". Chords are indicated above the staff: Db, Ab/C, Bbm, Gb5, and Db. The dynamic *mf* is marked in the first measure.

13

mu - sic makes you feel good, is - n't bo - ring what-so - e - ver_ You

Ebm *Fm* *Gb* *Ab(add4)*

f

17

get to be a part of some thing mind blo-wing and fun, and you'll

B *Gb* *Db* *F7* *Bbm* *Ab*

21

love being in a band cos there's a place for ev' - ry - one.

molto rall. *A tempo*

Gb *Db* *Dbm/Ab* *Ab7*

molto rall. *A tempo*

25 C Brass! Brass!

Brass! if you choose it, Brass! can groove it,

C Db Gb6 Db Ebm/Gb

29 Brass! Brass!

Brass! it's in-stru men-tal, Brass! soft and gen-tle,

Db Gb6 Db/Ab

33 D Brass! Brass!

Brass! will pow-er through it, Brass! can jazz and blues it,

D Db Gb6 Db Fb(omit5)/Gb Ebm/Gb

37 Brass!

Brass! march to it, Brass! you can do it!

Db Gb Gm(omit5) Db/Ab Db/Ab

Straight sfz swing

41 **E**

You can play the cor - net when you're hang - ing out at home, you can

mf

E Db Ab/C Bbm Gb⁵ Db

mf

45

play the te - nor horn, — the bass, or e - ven the trom - bone, — but

Ebm Fm Gb Ab(add4)

f

49 F

when we play to-ge - ther and the sound blows you a - way, that's the

F G \flat D \flat F B \flat m A \flat

53 **molto rall..** **A tempo**

Brass Band bug that's got you... and that's why we learn to play...

G \flat D \flat D \flat m/A \flat A \flat ⁷

molto rall.. **A tempo**

57 G Brass! Brass!

Brass! if you choose it, Brass! can groove it,

G D \flat G \flat ⁶ D \flat E \flat m/G \flat

61 Brass!

Brass! it's in-stru men- tal, Brass! soft and gen- tle,

Db Gb⁶ Db/Ab

sfz

65 **H** Brass!

Brass! will pow-er through it, Brass! can jazz and blues it,

H Db Gb⁶ Db Fb(omit5)/Gb Ebm/Gb

69 Brass!

Brass! march to it, Brass! you can do it! Being

Db Gb Gm(omit5) Db/Ab Db/Ab

Straight *sfz* swing

73

I

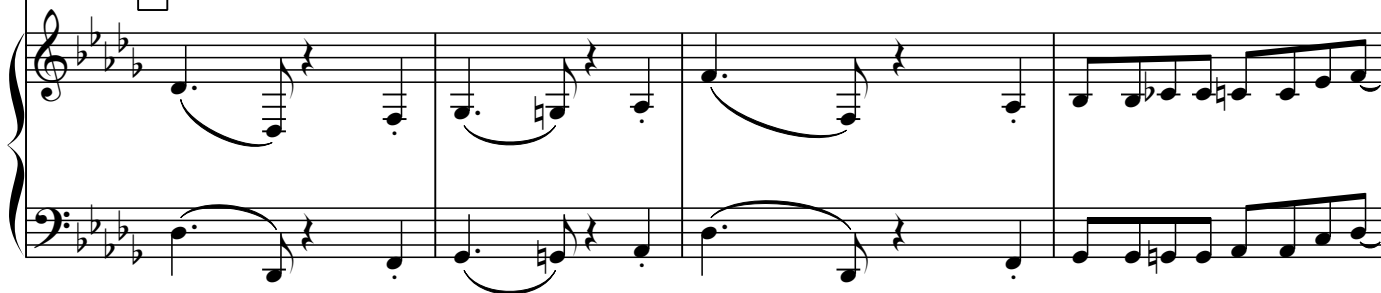


in it means being on it. Being with it and get-ting lots from it. Being

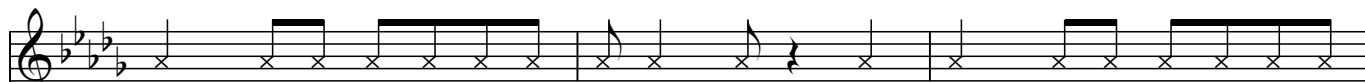
- ♯ ♭x ♭x x ♯ x x ♭x x ♯ ♯ x
Being in it means being on it. Being

- ♯ ♭x
Being

I



77



right in the mid-dle gi-ving it some class, being right in the mid-dle gi-ving

♭x x ♯ ♯ x x x x x x ♯ ♯ x ♭x x x x x x x x
with it and get - ting lots from it. Being right in the mid - dle giv - ing

♭x x ♯ x x ♯ ♯ x ♯ ♯ x ♭x x ♯ ♯ x ♯ ♯ x
in it means being on it. Being with it and get - ting lots

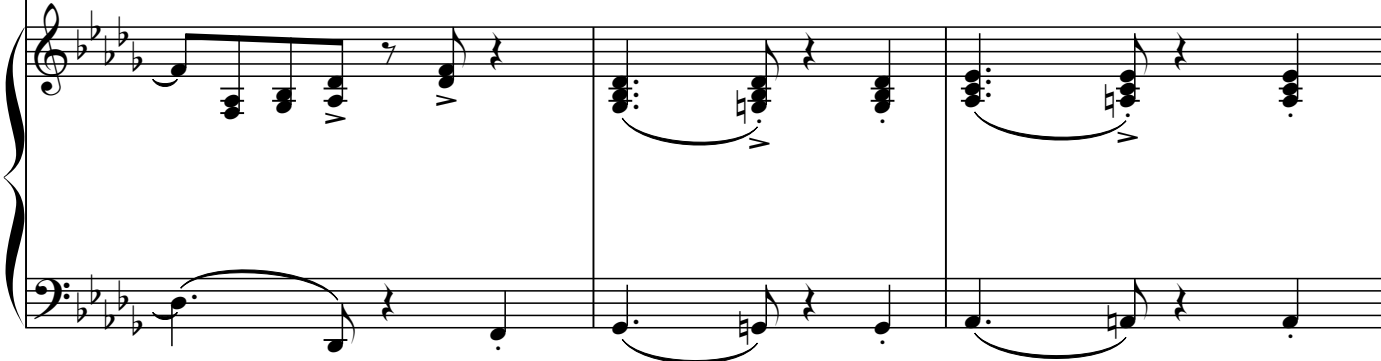
D_b(omit5)

G_b

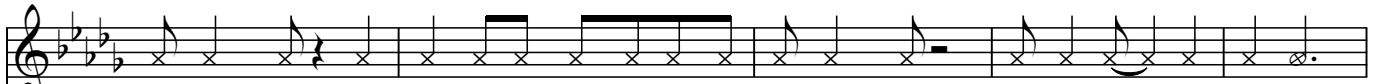
G^o

A_b

A^o



80



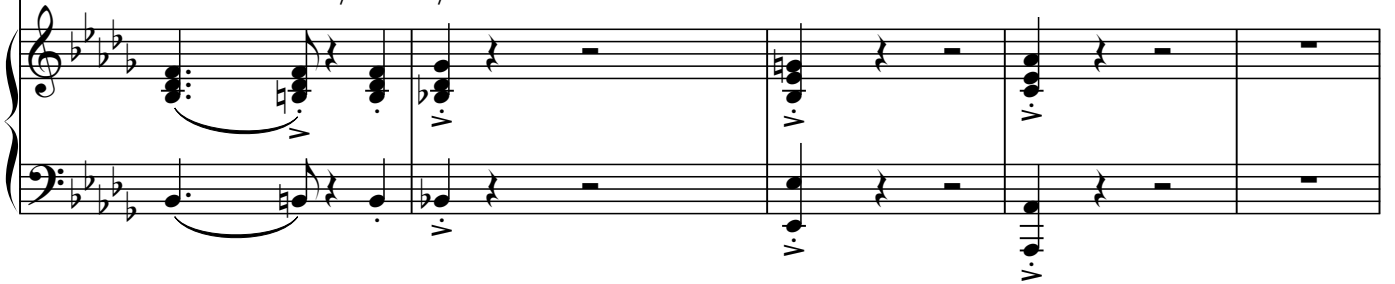
it some class, being right in the mid-dle gi-ving it some class, A-cing life_ and play-ing_

it some class, Being right in the mid - dle giv - ing it some class, A - cing life_ and play - ing_
from it. class, Being right in the mid - dle giv - ing it some class, A - cing life_ and play - ing_

Bbm Db7(omit5)/Cb Gb/Bb

Eb

Ab

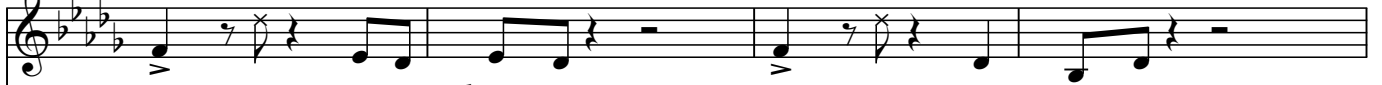


85

J

Brass!

Brass!



Brass! if you choose it, Brass! can groove it,

J Db

Gb6

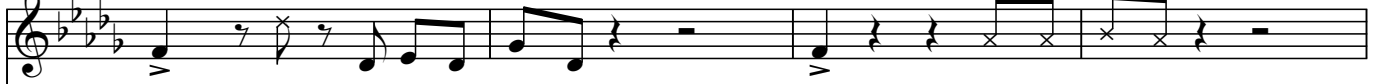
Db

Ebm/Gb



89

Brass!



Brass! it's in-stru men-tal, Brass! soft and gen-tle,
Db Gb6 Db/Ab



93 K

Brass! Brass!

Brass! will pow-er through it, Brass! can jazz and

K
Db Gb⁶ Db

96

blues it, Brass! march

F^b(omit5)/G^b Eb^m/G^b Db

98

to it, Brass! you can do it!

G^b G^m(omit5) Db/Ab Db/Ab

Straight sfz swing